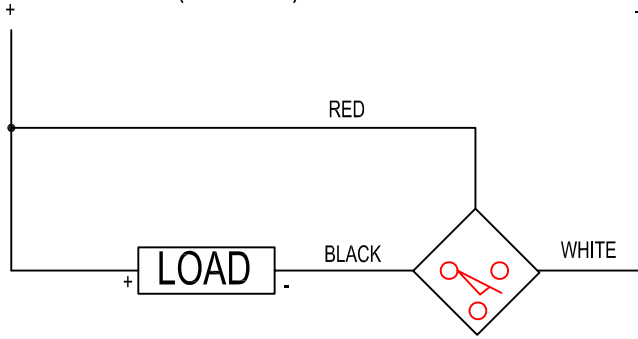


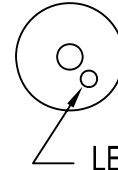
NORMALLY OPEN
NPN (SINKING)



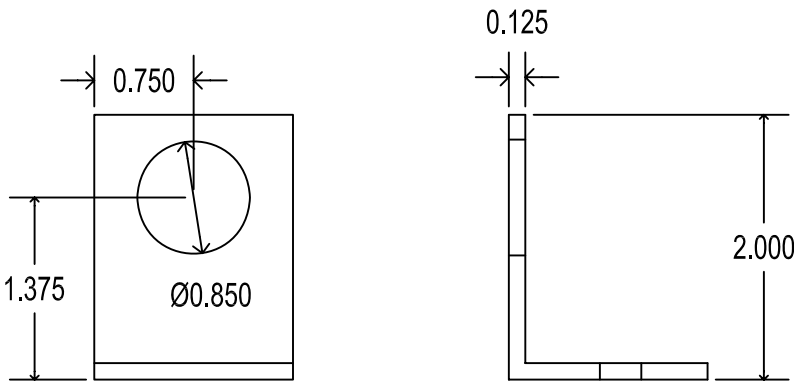
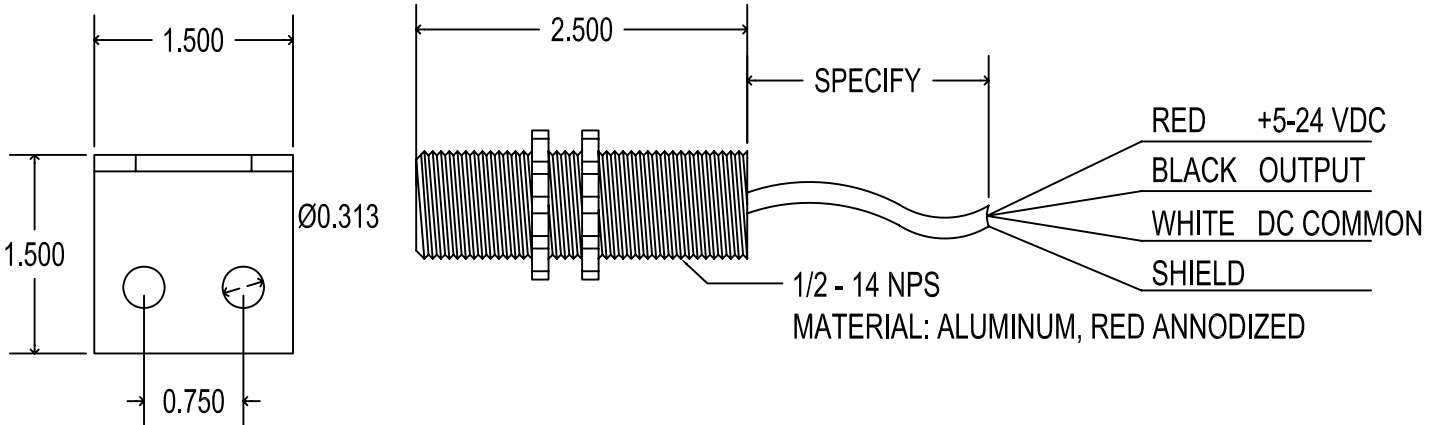
LOAD CURRENT : <100 ma
 OPERATING VOLTAGE : 5 - 24 VDC
 OPERATING CURRENT : 28 ma
 OPERATING TEMPERATURE RANGE: -40 TO 140 DEGREES F
 NOMINAL SENSING DISTANCE : .75 INCHES

Sensor gap tolerance is .125" to .75". Sensor gap setting should compensate for changes due to shaft thrusting, wobble, expansion or contraction, vibration, etc.


SENSOR BACK VIEW



LED - ON WHEN
TARGET PRESENT



OPTIONAL MOUNTING BRACKET

						DRAWN BY	DP	Process Control Systems 327 Lake Hazeltine DR Chaska, MN 55318 Phone: 800-328-0738 
						CHECKED BY		
						ENGINEER		
						DATE	1/31/06	
						<small>This Drawing is the property of Process Control Systems, and shall not be duplicated, disclosed, in whole or in part, or used for any purpose other than that for which provided without the written consent of Process Control Systems.</small>		Title DIGITAL SENSOR NPN (SINKING) OUTPUT
A	1/14/10	Update Specifications			DP			
REV.	DATE	DESCRIPTION	BY	APPR'D	SCALE:	REV. A	DWG. No. SA1847-E1	SHEET OF